



USER MANUAL

Smart Tools

Version: V1.01



More in Sight

Copyright Statement

This manual may not be reproduced in any form or by any means to create any derivative such as translation, transformation, or adaptation without the prior written permission of Milesight Technology Co., Ltd (Hereinafter referred to as Milesight).

Milesight reserves the right to change this manual and the specifications without prior notice. The latest specifications and user documentation for all Milesight products are available on our official website www.milesight.com

Table of Contents

Chapter I Introduction.....	3
1.1 Overview.....	3
1.2 About Software.....	3
1.3 System Requirements.....	4
Chapter II IPC Calculator.....	5
Chapter III NVR Calculator.....	7
Chapter IV Disk Calculator.....	9
4.1 Add devices.....	9
4.2 Modify Channel.....	10
4.3 Delete Channel.....	11
4.4 Disk calculate.....	11



Figure 1-2 About


1.3 System Requirements

Operating System: Microsoft Windows XP / Windows 2003 32-bit, Windows 7 / Windows 2008 32-bit or 64-bit

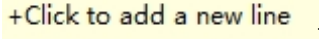
CPU: Intel Pentium IV 3.0 @ 3.00 GHz or above

RAM: 1G or above

Chapter II IPC Calculator

Click  tab to enter the IPC Calculator interface.

Steps:

1. Click  to add a new NVR type.

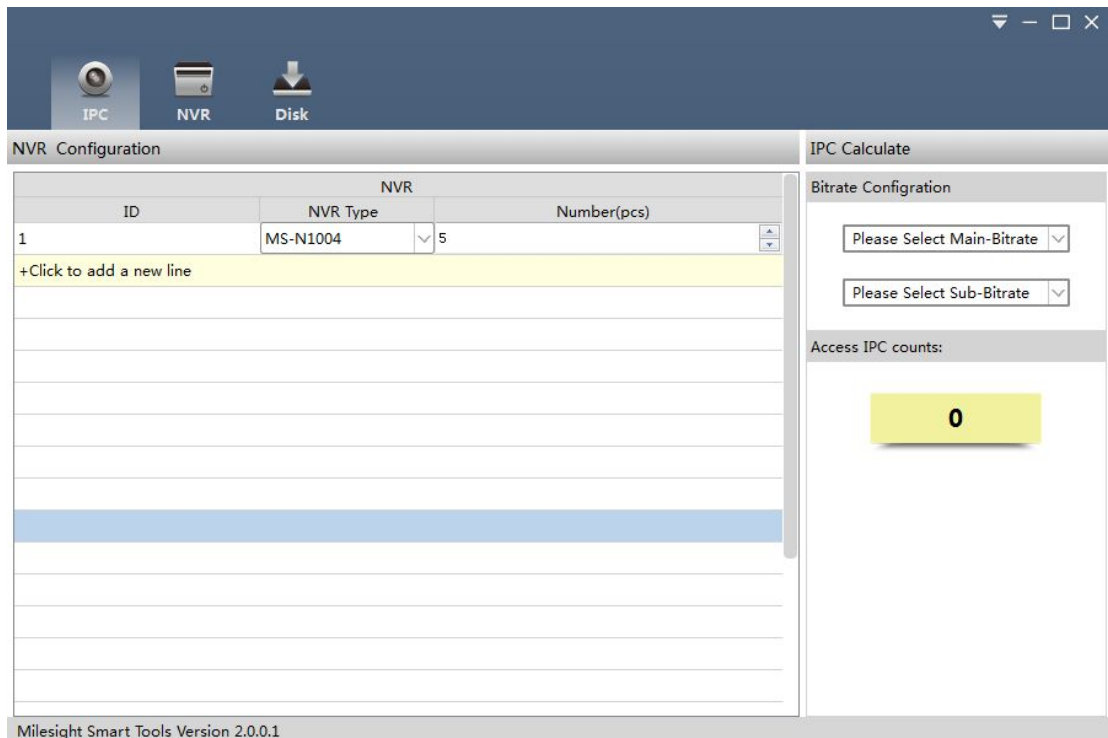
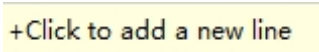

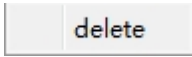


Figure 2-1 IPC Calculator

2. Edit the number of analog camera you want to disable and the number of the NVR.
3. You can click  to add other NVR types. Or click to select a line and right-click it to get the  button, and click  to delete the NVR type.

Note: You can multiple lines by holding the Ctrl or Shift key to delete the NVR types.

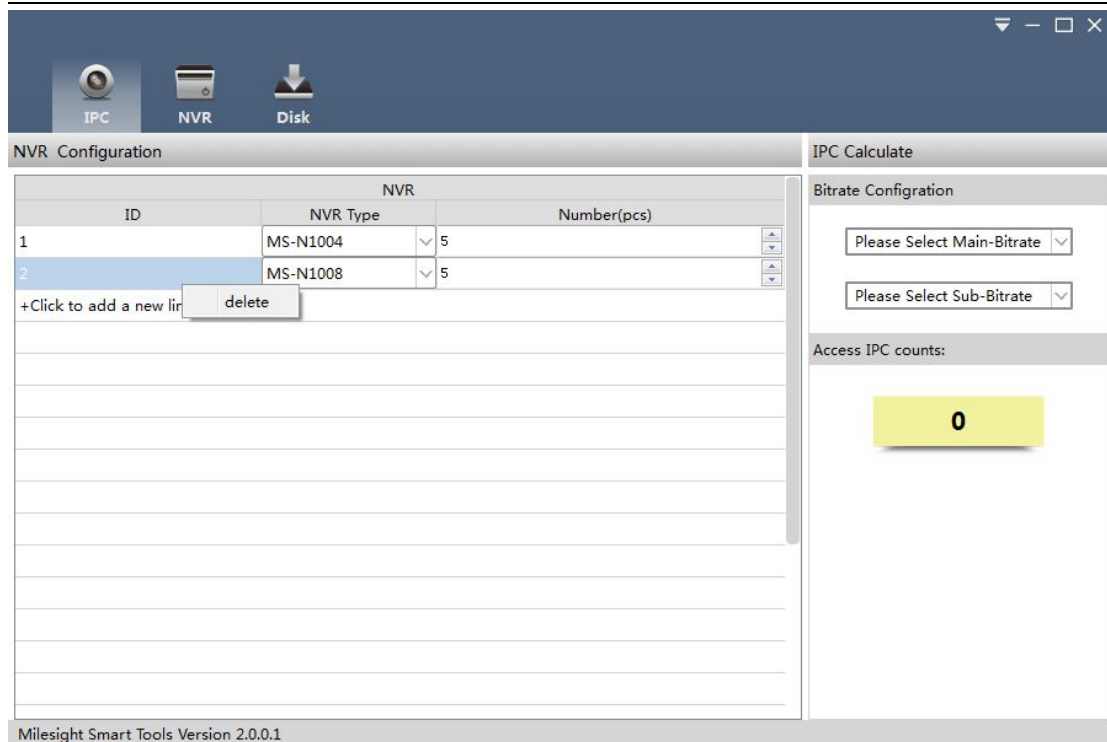


Figure 2-2 Delete devices

4. Edit the main stream and sub-stream parameters of the IPC in the right panel.

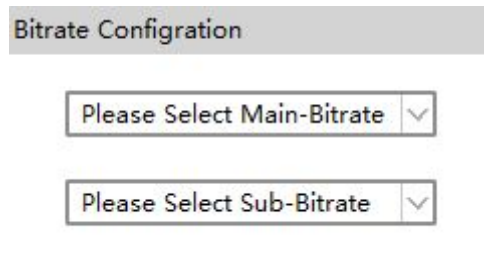


Figure 2-3 Bitrate Configuration

5. You can see the number of the IPC that can be connected.

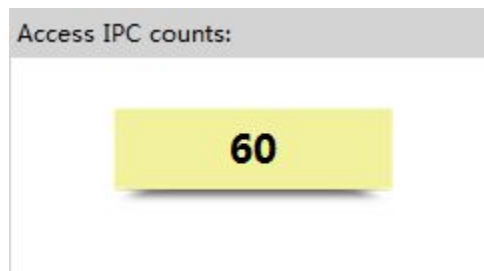


Figure 2-4 IPC counts

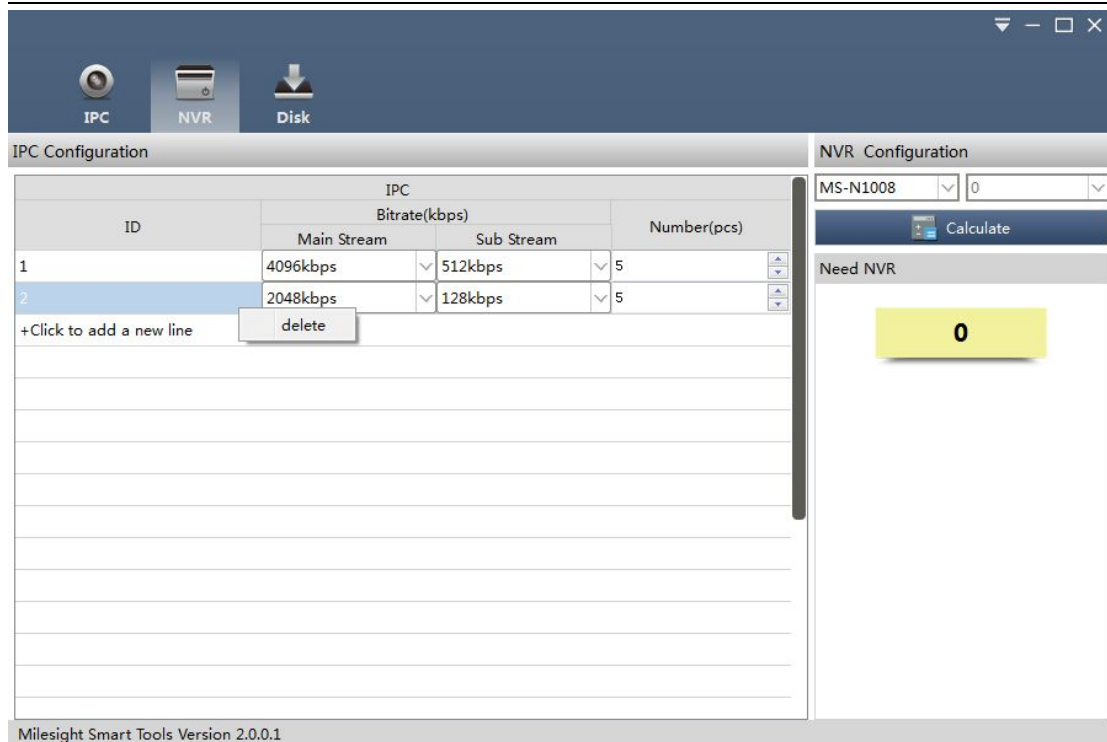


Figure 3-2 Delete devices

- Select the NVR type in the right panel .

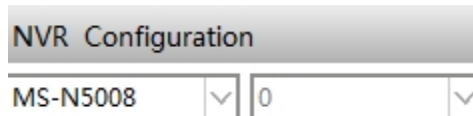


Figure 3-3 NVR Configuration

- Click to compute the number of NVR needed to manage the IPC.

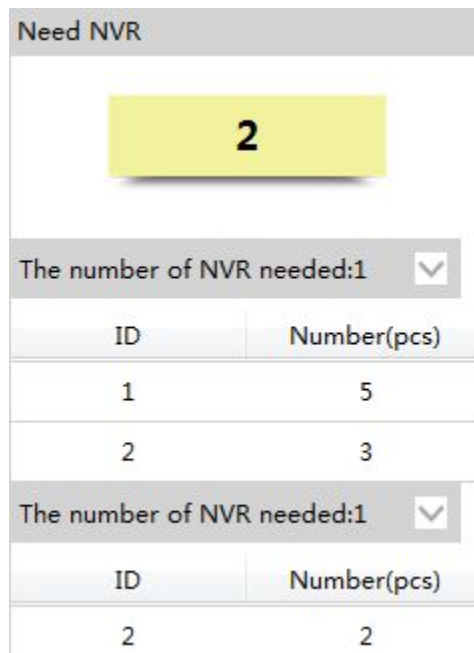


Figure 3-4 NVR counts

Chapter IV Disk Calculator

4.1 Add devices

1. Click **+ Add Manually** .
Enter the “Add Channel”interface.

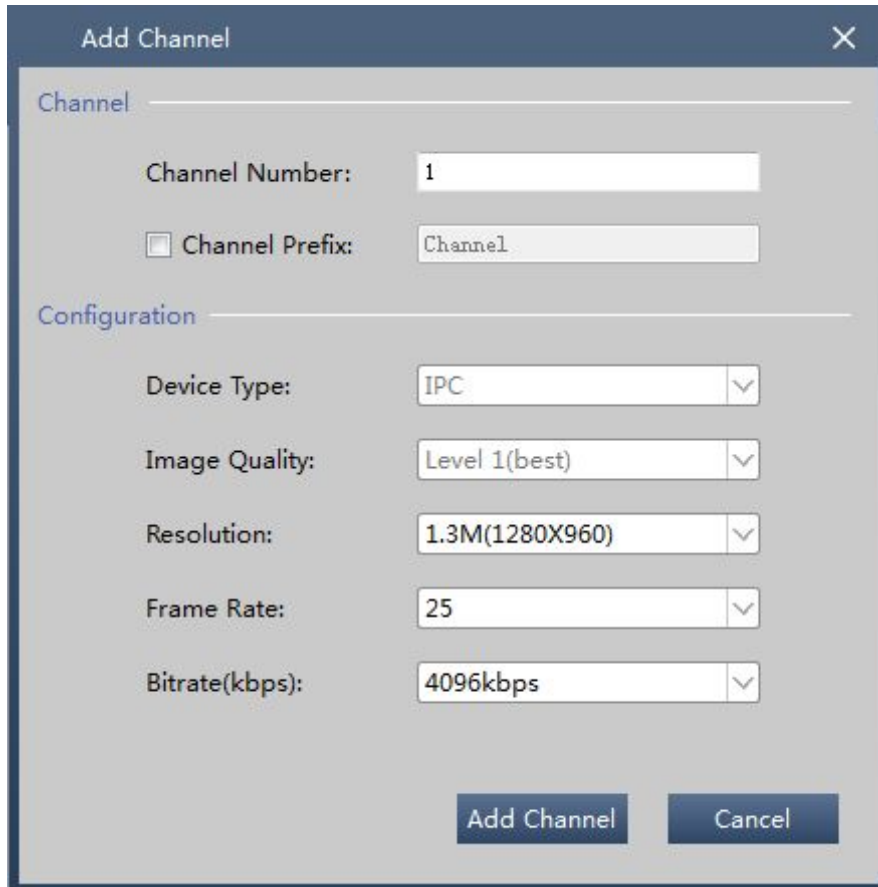


Figure 4-1 Add Channel

2. Input the channel number 、channel prefix,set device type 、image quality、 frame rate and bitrate.
3. Click **Add Channel** ,add channels successfully.

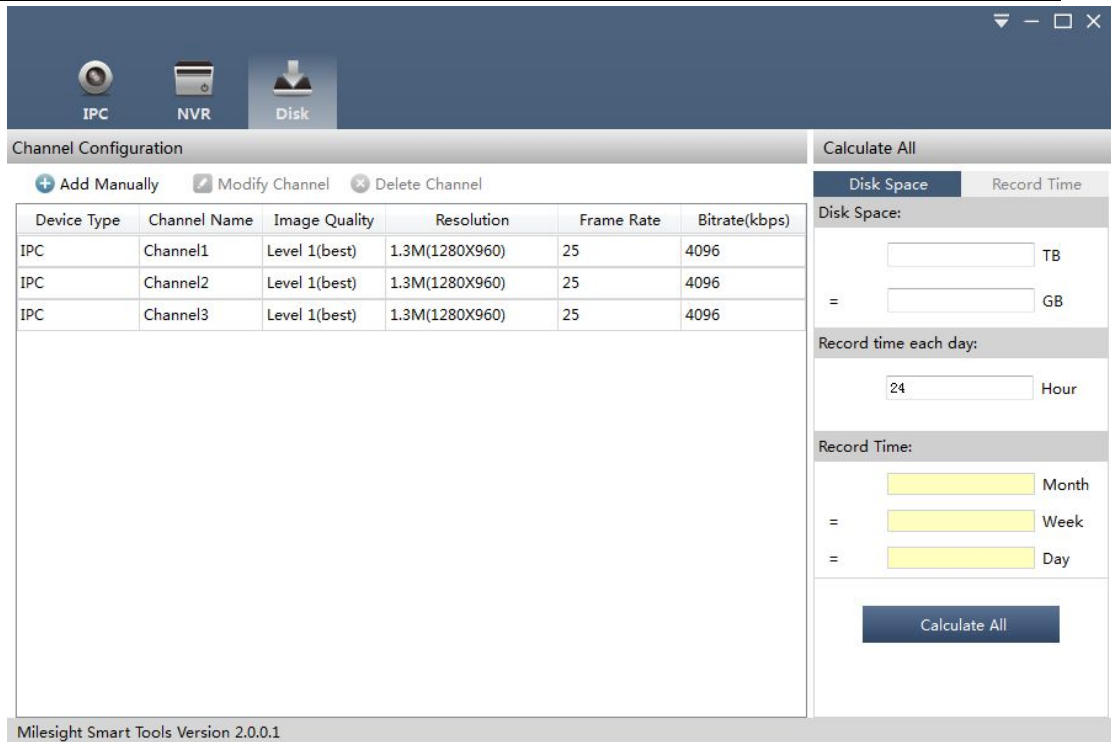
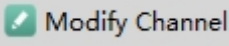


Figure 4-2 Add successfully

4.2 Modify Channel

1. Select the channel has been added, click . Enter the "Modify Channel" interface.

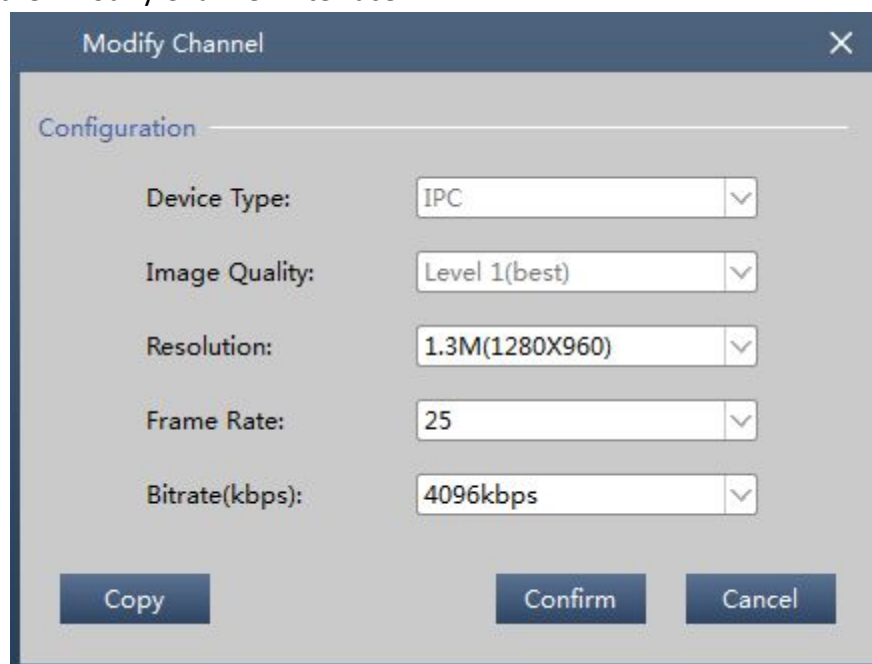


Figure 4-3 Modify Channel

2. Choose the device type、 image quality、 resolution、 frame rate and bitrate.

3. Click "Copy".
Enter the "Copy" interface. The parameters can be replicated to other channels.



Note:

Click "Select All", can choose all of the channels.

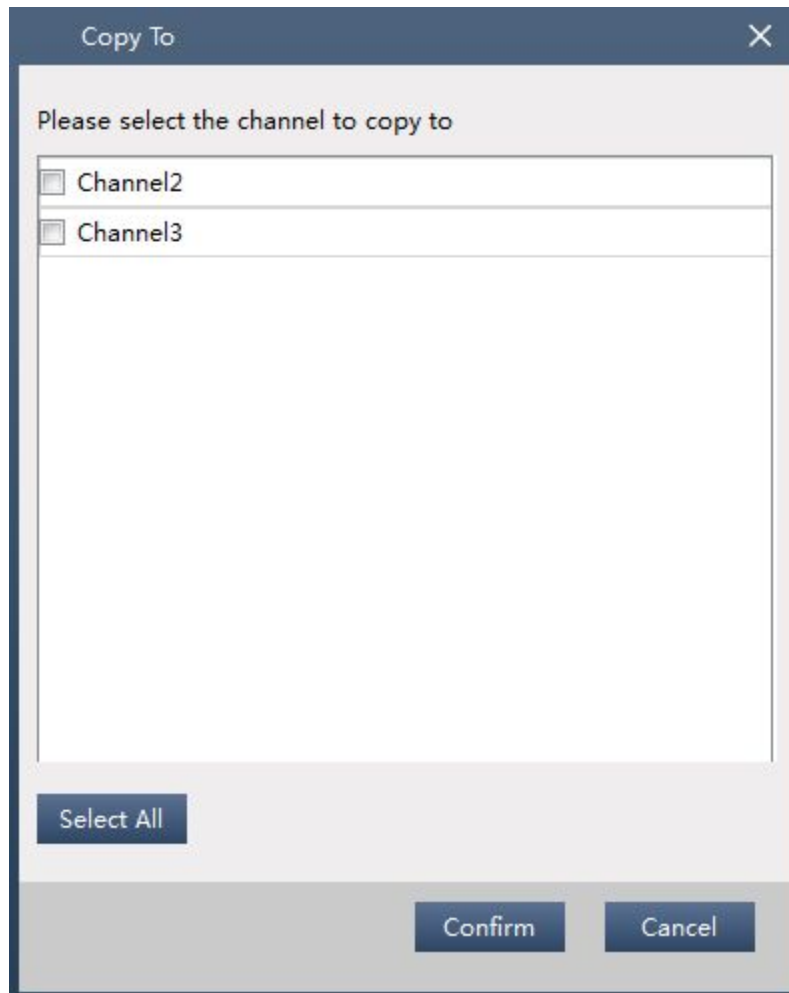
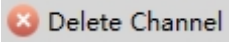


Figure 4-4 Copy

4. Click "Confirm", finish copy and return to "Modify Channel" interface.
5. Click "Confirm", finish the setting.

4.3 Delete Channel

Select the channel has been added, click  to delete the channel.

4.4 Disk calculate

- 1) Known hard disk space calculate recording time
 1. Select "Disk Space" in the upper right corner of the software main

interface. Input the total disk capacity in the **Disk Space**.



Disk Space Record Time

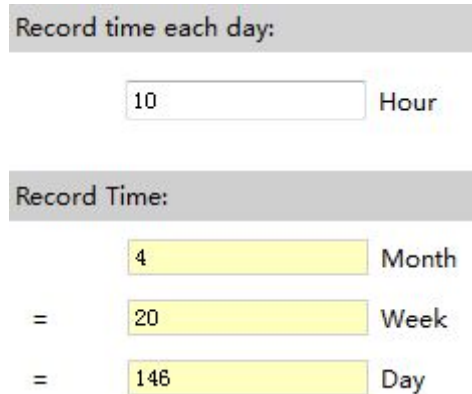
Disk Space:

6 TB

= 6000 GB

Figure 4-5 Known Disk Space

2. Input each day's record time .
3. Click **Calculate All** to calculate the record time.



Record time each day:

10 Hour

Record Time:

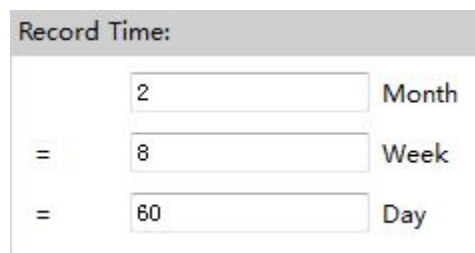
4 Month

= 20 Week

= 146 Day

Figure 4-6 Calculate Record Time

- 2) Known recording time calculate the size of the hard disk .
 1. Select "Record Time" in the upper right corner of the software main interface. Input record time.



Record Time:

2 Month

= 8 Week

= 60 Day

Figure 4-7 Known Record Time

2. Input each day's record time .
3. Click **Calculate All** to calculate the Disk Space.

Record time each day:

10 Hour

Disk Space:

3 TB

= 2458 GB

Figure 4-8 Calculate Disk Space